

Hoverflies

Syrphidae spp



What they do

Adults mainly eat nectar and pollen, though they also eat the honey-dew produced by aphids. The larvae are insectivores and prey on aphids, thrip, and other plant-sucking insects.

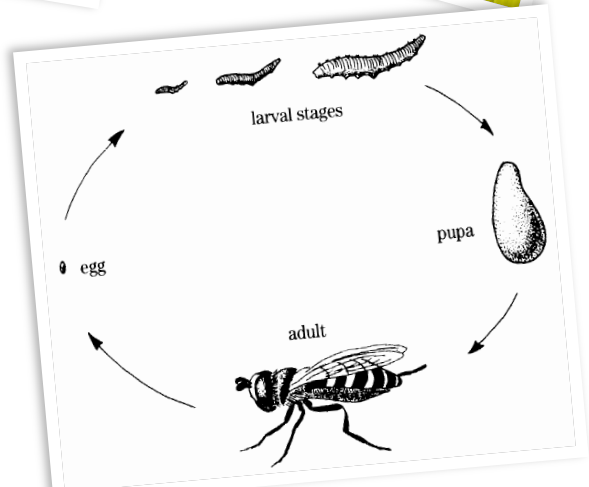
Not many insects can digest pollen but hoverflies use it as a rich protein source.

What to look for

Hoverflies are easily seen hovering around near flowers in spring and summer (a few at other times of year). Larvae are small and hard to see but will be busy at work if you can see adults flying around.

How to attract them

The adults rely on flower pollen and nectar so plant some flowers to keep them around: daisies, herbs, gone to seed vegetables are all a good start. Try and have something in flower at all times of the year



Hoverfly lifecycle: egg>larvae> pupae>adult.



The small slug-like larvae eat aphids and other tiny pests and their eggs.

Larvae picture: Clemson Uni-USDA Cooperative Extension Slide Series, Bugwood.org

Lifecycle pic: <http://www.microscopy-uk.org.uk/mag/artmay07/cd-hoverflies.html>